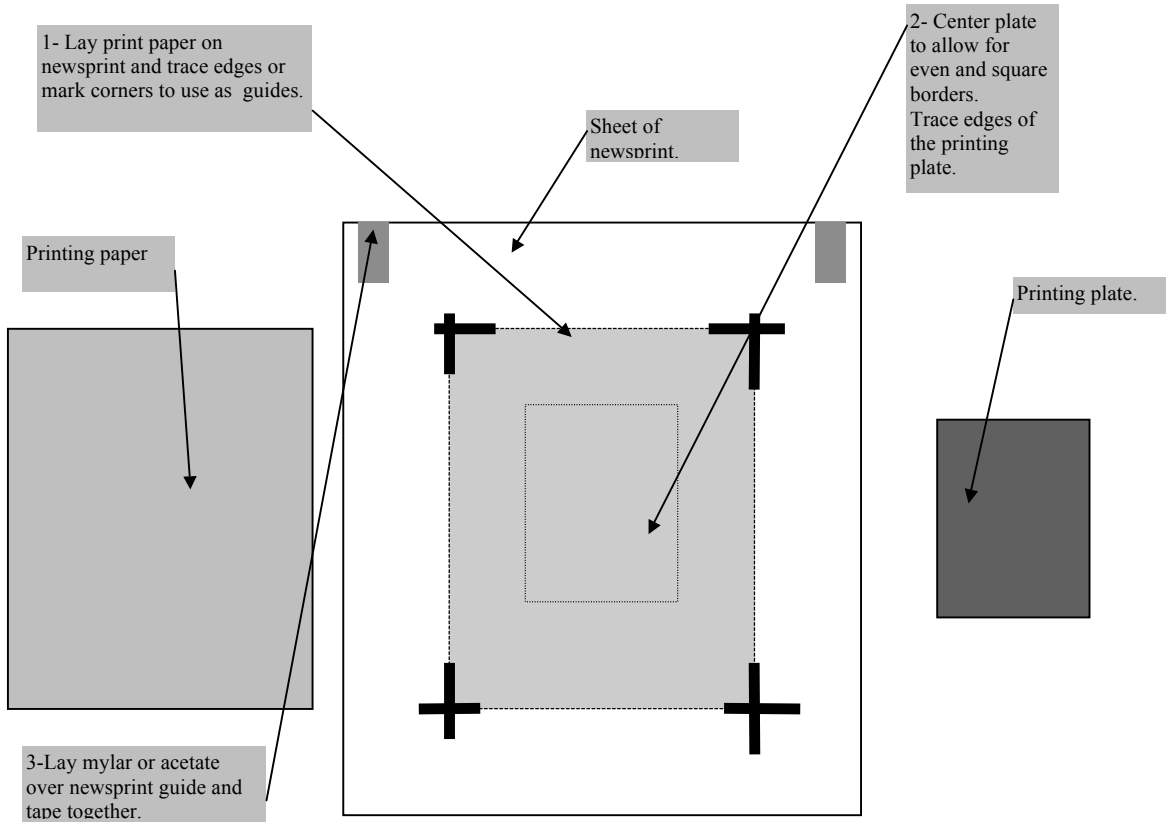


# Registration Methods

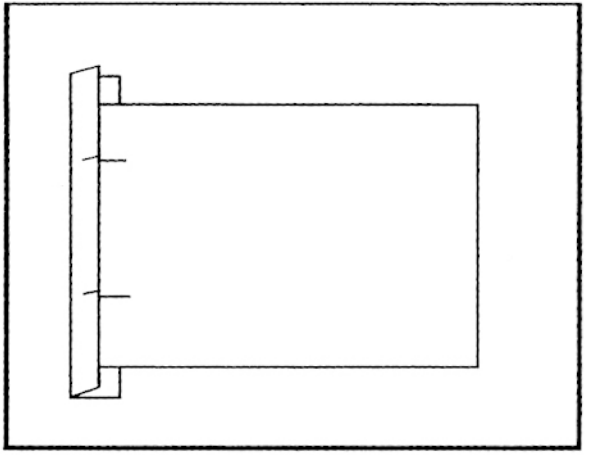
Eye Balling, (printing face down)

Base Sheet Registration

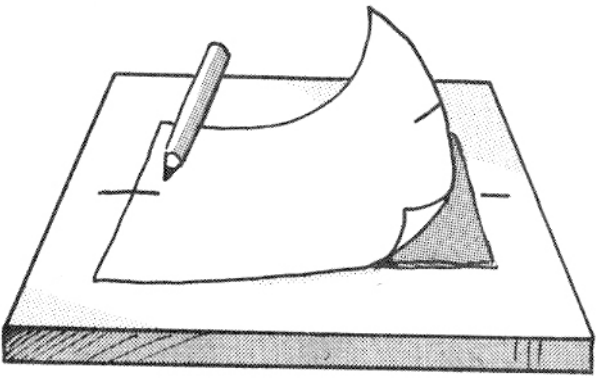


Walter Hoyle Method

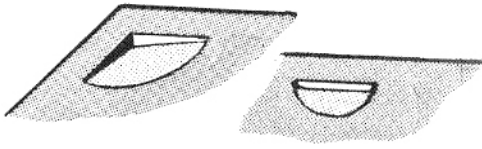
(this is often used if working with deckled edges.)



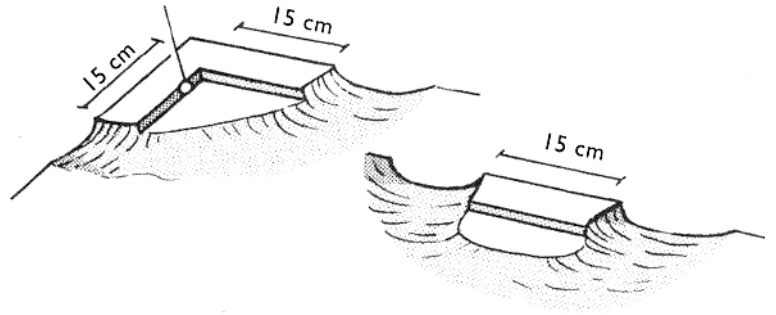
Pencil registration (T-Bar)



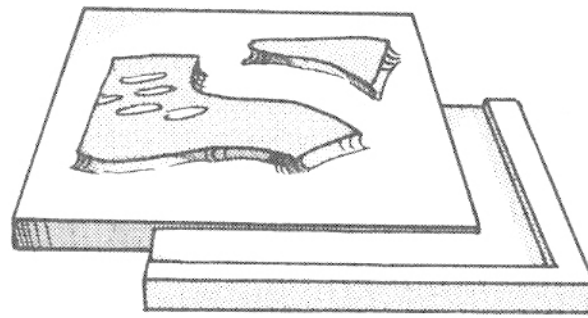
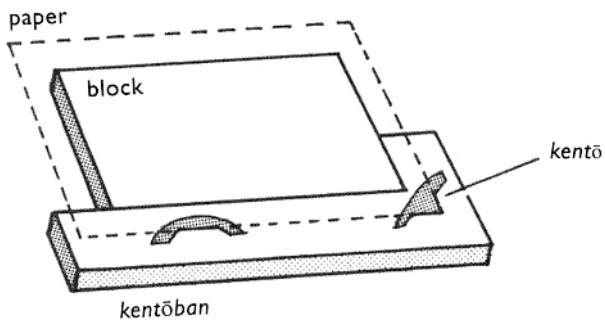
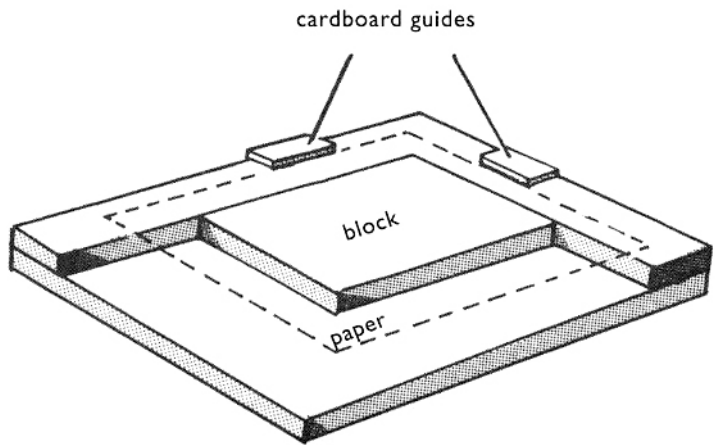
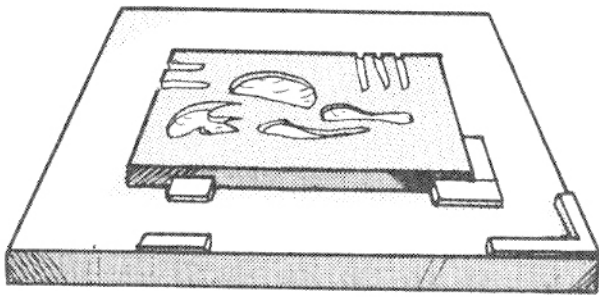
Traditional Kento



Depth of the *kentō*: 1.5 times the thickness of the paper



Variations of Modified Kento



### Pin Registration on base sheet.

With this system the printing block and the registration system are separate.



I recommend the Punch Registration Pins from Takach Press Corporation.  
.250" (1/4") Pin Diameter  
.070" Pin Height

These will work with a standard hole punch.

You will need to allow for at least an extra inch of paper on one side to allow for the holes.

1. Cut down paper to size, allowing for 1" extra inch at the top to accommodate the holes for registration. (this inch will later be torn off). \*Note if you are doing a long format print, put the pins on the longest side.
2. Using a standard hole punch, punch registration holes in all sheets of paper (use a jig) If using thin eastern papers you can add a strip of tape on one end before punching the holes for added strength.
3. Next, lay your punched sheet of paper onto a sheet of newsprint and trace around the edges.
4. Remove the sheet, and now center your printing block relative to the paper outline, and then trace around your block. This is your template.
5. Remove the block, and tape a sheet of duralar or acetate over your newsprint template.
6. Lay your block back on the template, and securely tape down matt board on at least two sides.
7. Next, place your sheet of paper back on top. Now position the pins in the holes of the paper and securely tape them down.
8. You will now use this template with it's attached pins until you've printed all your blocks/runs. **DO NOT REMOVE THE PINS UNTIL YOU ARE DONE PRINTING!!!!**

### Pin Registration on base block.

Recommended for un-mounted linoleum.

With this system the printing block and registration system are attached to one another.

1. After you've carved your lino, cut a piece of plywood or MDF that is the same width as your lino block, but add on an additional 3-5 inches on one end to accommodate your pins.
2. Glue your lino block to the backing block and let dry.
3. Figure out your borders and punch your paper as above.
4. Use a sheet of acetate with punch holes the same size as your printing paper to locate the position of the pins on the backing block. (Securely tape pins in place).

### Registering irregular shaped blocks.

