

CURATING PRINTS

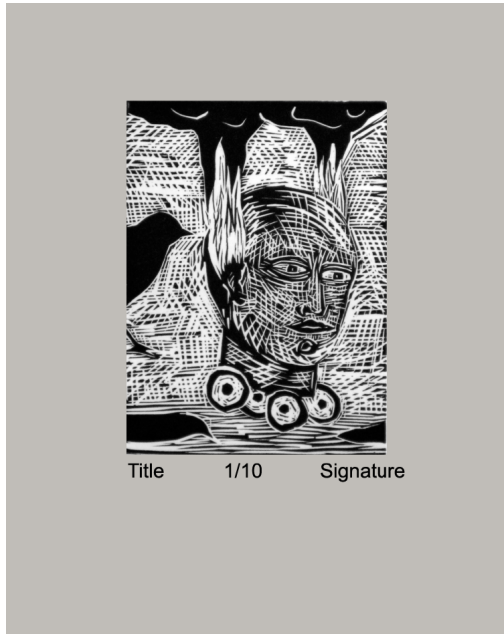
Professor James Bailey

ABBREVIATION	“SPELLED OUT”	DEFINITION
W.P.	Working Proof	Proof usually done on a newsprint (black and white)
S.P.	State Proof	There may be any number of state proofs. These involve substantial changes made before the final edition is pulled, and often show major stages in the development of the image. The difference between states is sometimes so great that separate editions are pulled from individual state proofs: I 1/10, II 1/10 or State I 1/10, State II 1/10
T.P.	Trial Proof	Trial proofs are pulled to decide the choice of color, ink and paper. The best becomes the BAT.
A.P. -or- A/P	Artist Proof	Typically represents 10% of the edition. These works are out of the edition and are kept by the artist or for the artist’s use.
E.V.	Edition Varies	Basic image stays the same, but may use different papers, monotyping, chine colle, etc. EV1/10-EV10/10
BAT -or- RTP	Bon a’Tirer or Right to Print	“Good to Pull” proof is the first impression that meets the aesthetic and technical standards of the artist. It is the guide against which each print in the edition is compared and becomes the property of the master printer at the end of the run.
1/1 or AB or MP	One of a Kind, or Monotype	Denotes this is a one of a kind print, such as a monotype or a major variation on a print.
1/20	Edition	Number of prints that are identical. 3/20 designates it as the 3 rd print out of 20.
P.P.	Printers Proof	These proofs are given to the printer who collaborated with the master printer and the artist. They may be dedicated personally or simply marked P.P. or “Printers Proof”
	Cancellation Proof	An impression taken from a stone, block or plate after it has been effaced at the end of a run. This indicates that no further prints can be made.
Remark		This is when the artist writes or doodles on the borders of the print. It usually makes the print more valuable.
Blind Emboss		A blind embossment made on the corner either representing the artist, print shop, paper or all three.
Chop		A stamp on the border of a print either by the artist or the prints shop.

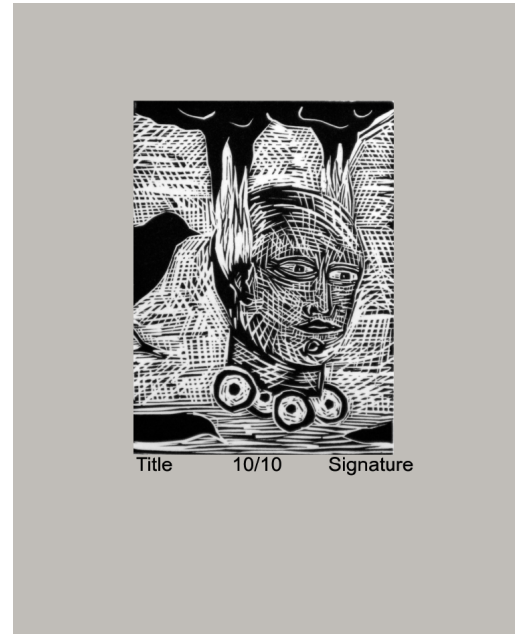
Labeling an Edition

Label working proofs (WP or W/P); State Proofs (SP or S/P); Artist Proofs (AP or A/P); Bon a Tիրer (BAT or B.A.T); Printers Proofs (PP or P.P)

For an edition of the same print, The edition numbers are always written like a percentage, with the first number denoting which print it is in the edition and the second number denoting the number of prints in that edition.



Either / Or



In this edition, this is number 1 out of 10 total prints.

The next print would be labeled 2/10, 3/10 and so on until you reach 10/10.

This is number 10 out of 10 in the edition.



Either / Or



On a bleed print you can sign on the bottom front, using graphite pencil or a white pencil

Or you can sign it on the backside in graphite.